

D E L L O S C O M P I G L I O



Compagnia Dello Scompiglio
Kind of Blue



Compagnia Dello Scompiglio Kind of Blue

Contacts

Promotion

Anna Estdahl
kindofblue.production@gmail.com
+39 333 7508235

Compagnia Dello Scompiglio

c/o Associazione Culturale Dello Scompiglio
Via di Vorno, 67
55012 Vorno, Capannori (LU) Italy

technical director
Paolo Morelli
+39 346 8733961

www.delloscompiglio.org



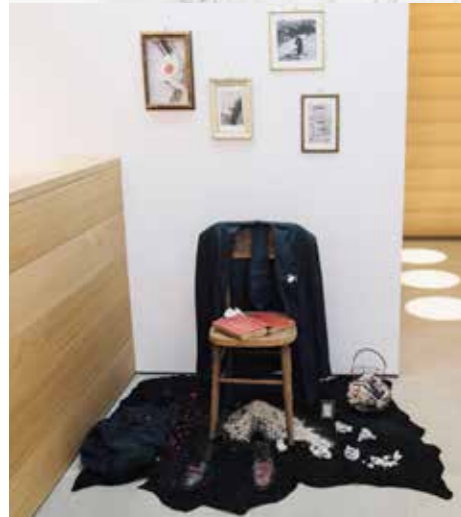
About the Performance Kind of Blue

Kind of Blue was born as the third part of the *Trilogia dell'Assenza (Trilogy of Absence)*. The director, Cecilia Bertoni, creates video portraits exploring the artists and collaborators of the preceding shows, now however, as people without a role, just as themselves. The director explores their physical and mental obsessions and their relationship to the creative act. They talk about their secrets and their bodies as imperfect casings. The bathrooms of their own homes become the places in which their secrets, their follies and their disappointments become explicit, while a kitchen becomes the nerve centre of the creation, but also the prelude and the epilogue of an endless wait.

The audience, seated on a scaffold, is enveloped by scrolling images of the video installation and views from above the blue earth as seen from a distance, the theatre of action of fragmented bodies. Live on stage, a turret and an astronaut who sees all this as a kind of afterlife.

In a seemingly arbitrary manner he associates the terrestrial stories, his favourite game, as an evaluation of what he misses the most in the spatial dimension: people? grace? or an upright and impartial judge who sets him on the right path? He no longer knows the difference between what is true and what is false, what is real and what is fictitious, what is incarnate and what is not, what is past and what is present.

A thread woven into the scene is a text by F. Nietzsche, about the pursuit of individuality, which rises impervious and strongly solitary.



Credits

idea, direction and scenery Cecilia Bertoni
music, sounds and noises Carl G. Beukman
assistant director Alice Mollica
astronaut Mauro Carulli
in the film Cecilia Bertoni, Carl Beukman, Marco di Campi San Vito, Marialucia Carones, Serge Cartellier, Serena Gatti, Claire Guerrier, Piero Leccese, Mees, Luigi Petrolini and Andrea, Cipriano, Deniel, Derox, Fausto, Francesco, Paolo e Didi & Gogo
text Cecilia Bertoni, Mauro Carulli and the performers.
 Friedrich Nietzsche, "Il viandante", from *Così parlò Zarathustra*
costumes Rosanna Monti
technical direction Paolo Morelli, Associazione BAM
props and fittings Cipriano Menchini, Paolo Morelli

Short Movies

camera Mauro Carulli
IPOD camera Cecilia Bertoni, Serge Cartellier, Claire Guerrier, Mees
editing Mauro Carulli, Cecilia Bertoni
camera, editing and post-production Associazione BAM, Paolo Morelli, Luca Telleschi
 an Associazione Culturale Dello Scompiglio production

production 2011-2013
duration 50'
 S.I.A.E. Registration:
 The performance has not been registered with S.I.A.E. (Italian Society of Authors and Publishers).

Diffusion

The debut performance took place on 17 May 2013 at the preview of *Trilogia dell'Assenza* at the Tenuta dello Scompiglio in Vorno. *Kind of Blue* was performed at the XXI season of Fabbrica Europa (Stazione Leopolda, Florence) from 15 to 18 May 2014.

Kind of Blue is a stand-alone performance. To further explore the themes of the performance, the director has published a **journal** that contains notes of her work with the performers, consisting of texts, images and drawings.

Trilogia dell'Assenza is also included in a small **exhibition-installation**, which includes objects and images that create a prologue to *Kind of Blue* and could be set up if there is suitable space, such as a foyer or small exhibition room.

Video-Installations

These short movies created for *Kind of Blue* comprise a collection of three movies produced in limited editions, and are available for installation and festivals/seasons.

Technical Requirements of the Show

The equipment for the video projections and lighting is operated by the Company. The audio requires a four channel FOH system with two subs. If no FOH system is available, the Company can provide it.

Electrical Requirements

Standard 32A or 63A IEC plug with neutral 3P+N+E for dimmer (maximum instantaneous load 2 KW) and standard 16A IEC plug P+N+E for video, audio and led projectors.

Set up and Take Down Time

Two days to set up, one day to take down; please refer to the Technical Rider for details.



Nannerl, sorella di Mozart (Nannerl, Mozart's Sister) (première 21 June 2014) by Cecilia Bertoni with Carl G. Beukman is inspired by the dice game Mozart used for improvisation and plays between comic and tragic, sound and movement, between a brother and a sister, a male and a female.

About Compagnia Dello Scompiglio

Within the Cultural Association, instituted in 2006, we bring together the experience of a group of artists who have been working for years in Great Britain, Switzerland, Holland, and Italy, creating the company's shows and performances. The common characteristic of all these performances is the lack of a written theatre script at their starting point: on the contrary, they are all the result of the combined work of the ensemble. The contributions made by the various participants interact and contrast with each other from different points of view - everyday life, dreams, life and death - and in the widest range of art forms, including action, movement, music, and video. To date, there are six productions by the company.

Porta Girevole (Revolving Door) - a performance inspired by Sarah Kane's texts; direction by Claire Guerrier; performed by Cecilia Bertoni; co-produced by Unsafe Company (Basel) and Compagnie Crème Renversée (Paris). In Italy the show was performed in Rome at Teatro Furio Camillo, at the Ravello and Montepulciano Festivals and in Sesto Fiorentino, Florence, at the Teatro della Limonaia as part of the Dinamiche Scomposte season curated by Company Blu.

Atto Semplice (Simple Act) - direction by Cecilia Bertoni; premièred on 24 June 2011 at La MaMa Spoleto Open 2011 with further performances at the Prato Contemporanea Festival.

Trilogia dell'Assenza (Trilogy of Absence) is composed of three performances: *Tesorino, perché hai perso? (Sweetheart, Why Did You Lose?)* (2006-2009), *Riflessi in Bianco e Nero (Reflections in Black and White)* (2010) and *Kind of Blue* (2011-2013). The trilogy premièred in Vorno (Lucca) at the Tenuta Dello Scompiglio on 18 May 2013. The three performances interact and engage with the theme of losing and winning, its relationship with time, and in all its different dynamics, in and out of reality. The subject is addressed from different perspectives and develops in different spaces and places of the Tenuta Dello Scompiglio.

Tesorino perché hai perso? originates and develops around the ironic absurdity of winning and losing, and how both of these exert excessive influence on our self-esteem and on the concept of success in our culture. The performance takes place in the Performance Space, in a frontal relationship between actors and audience.

Riflessi in Bianco e Nero is a journey in four stages focused on loss and memory, that winds through various locations of the Tenuta, moving between action and installation, where the public and the performers sometimes end up mixed together.

The première of *Kind of Blue* - the last part of the Trilogy - took place on 17 May 2013 in one of the exhibition rooms of the Performance and Exhibition Space at the Tenuta Dello Scompiglio.



Technical Rider

May 2015

The show includes 4 video projections, two at the side, one facing forward and one on the floor. The side images can be projected through two convex mirrors positioned approximately 20 cm from the projectors to the floor. The images on the floor and facing forward should be projected from the ceiling. Walls and floor should be suitable for projections. The set design consists of a few objects, a bicycle and a structure in welded iron. The largest part of the structure measures 1.5 x 1.5 metres at its base and is 2.15 metres in height.

Equipment of the Company

- Panasonic PT VW430E video projector
- NEC PA550W video projector
- two wide-angle NEC or Panasonic video projectors
- two convex mirrors
- computer and video equipment
- DMX shutter
- ETC Smartfade lighting mixer desk
- LED Projectors
- three 19° profile spots
- computer audio
- SHURE ULX wireless microphone
- outboard audio
- audio mixer with dual parametric equalizer, if not available
- mini speakers

Equipment Required

- three channel lighting dimmer
- four channel FOH audio system, two front speakers with two subs and two rear speakers

Required Electricity Supply

- dimmer
(if the dimmer is to be provided by the company a standard 32A or 63A IEC plug 3P+N+E with 0.03A residual current protection is required, not more than 15 metres from the site of the show)
- sound, video and services:
one or more standard 16A IEC plug P+N+E with 0.03A residual current protection

Set up and Take Down Times

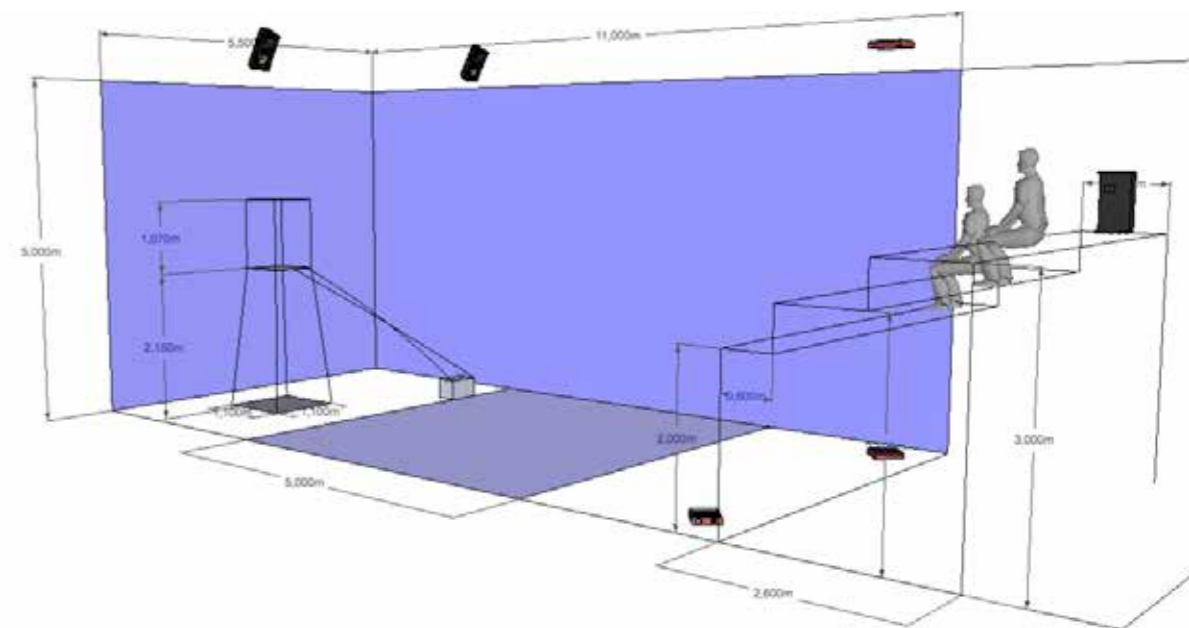
minimum 2 days to set up, 1 to take down

Audience Bleachers

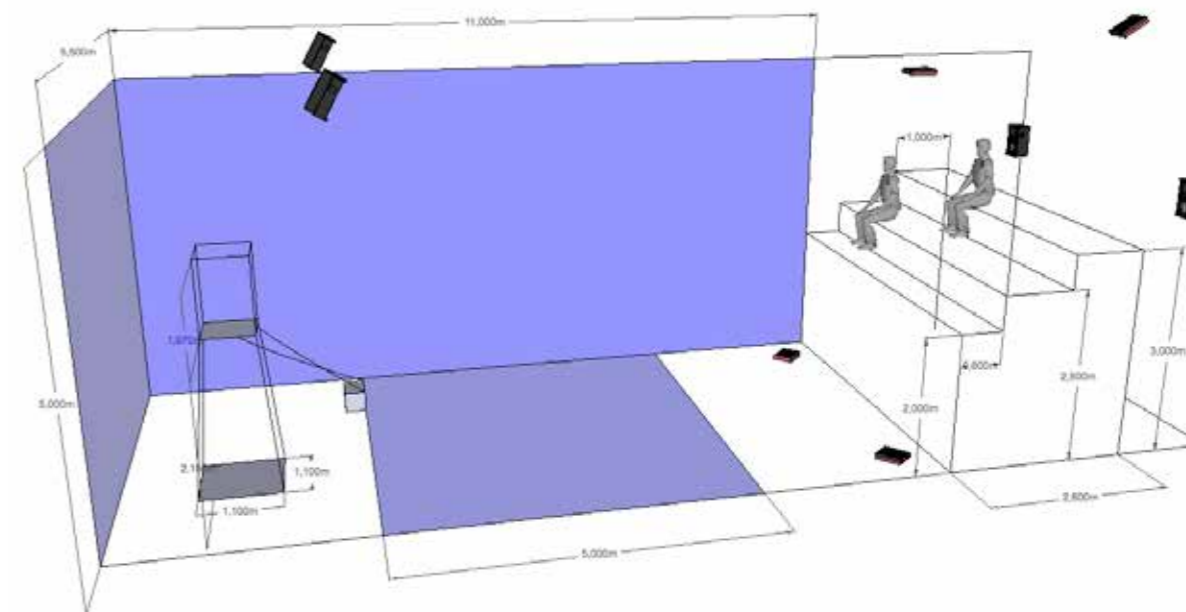
The audience should ideally be at a height of approximately 2.50 metres from the ground. Various arrangements depending on the features of the space can be discussed with our technical department

Rigging

Light fixtures, video projectors and sound equipment can be suspended from truss or other structure; various solutions can be tried out depending on the features of the venue



1. Kind of Blue - Ideal Arrangement



2. Kind of Blue - Ideal Arrangement